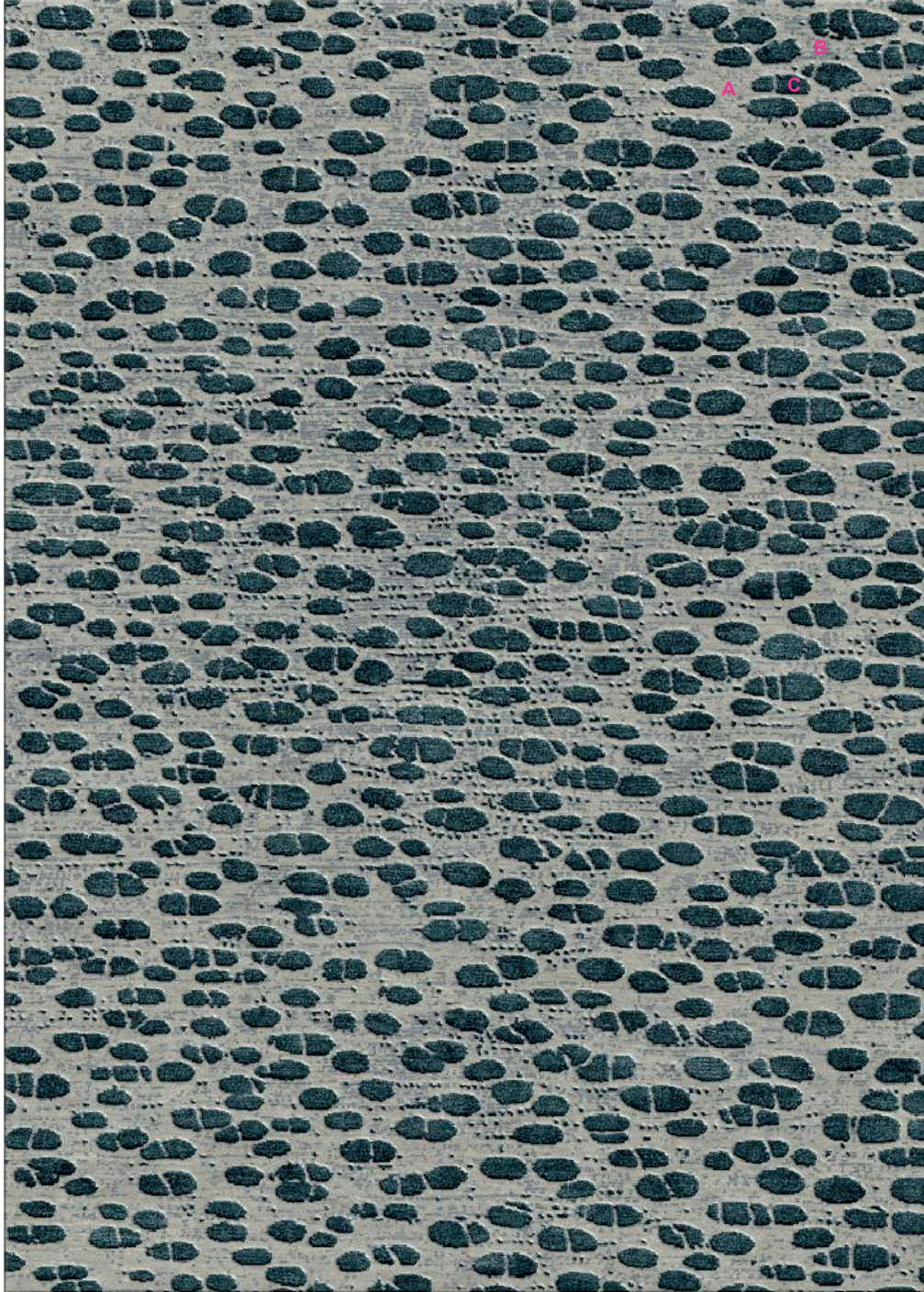




THE NETHERLANDS
WWW.RUGS.NL

Date:	September 23, 2014	Size (ex BO):	200 x 280 cm (TBD)
Project:	ONE 57	Full size (inc BO):	-
Design Firm:	Extell	Actual M2:	5.6 M2
Artwork Reference:	Uriel option 05	Sample reference:	-
ICE reference:	20140922-EONE57-U-05	Carving:	NA
Type:	area rug	Scale on A4:	1 : 15 cm
Quality:	handtufted H550, B4	Designer:	NK
Content:	100% NZ Wool	Extra notes:	color B in loop

Uriel option 05



A	ARS BP10 Wool cut
B	ARS BN06 Wool cut
C	ARS CF02 Wool cut

1mm
high pile

© ICE International. All rights reserved.

Date and sign or stamp for approval

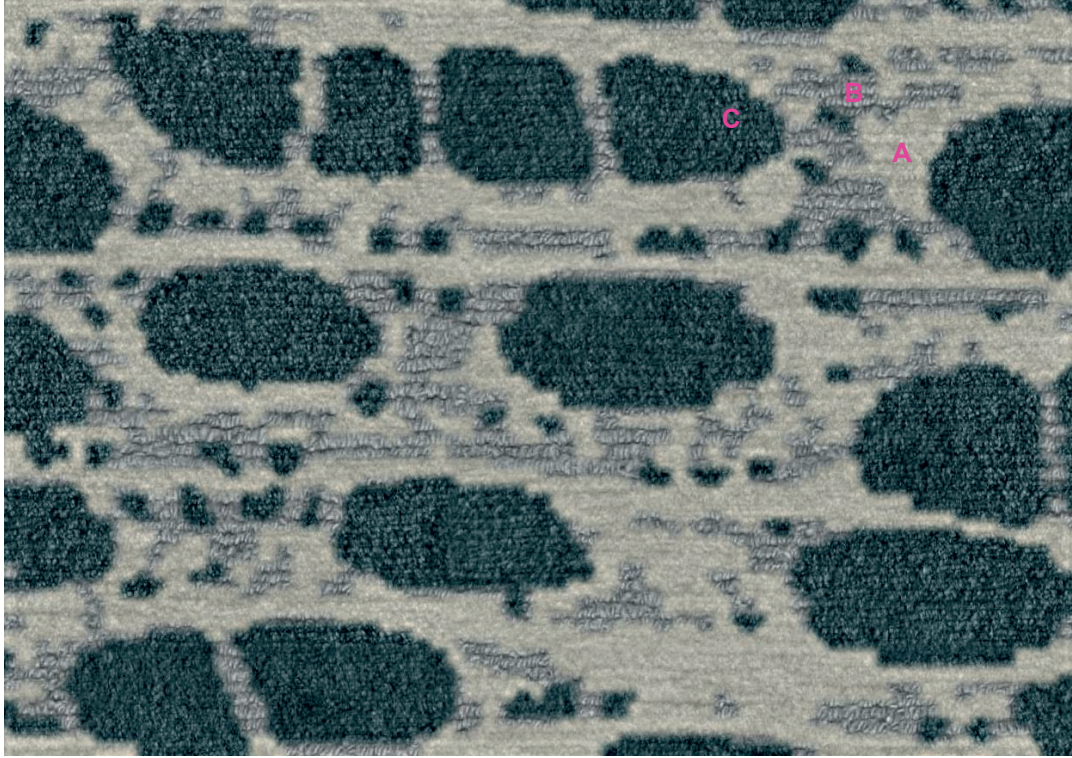
Please sign for your approval of scale, colour placement and layout of design. The colours in this rendering are indications only. Actual colours must be approved by sample or actual colour poms.



THE NETHERLANDS
WWW.RUGS.NL

Date:	September 23, 2014	Size (ex BO):	200 x 280 cm (TBD)
Project:	ONE 57	Full size (inc BO):	-
Design Firm:	Extell	Actual M2:	5.6 M2
Artwork Reference:	Uriel option 05	Sample reference:	-
ICE reference:	20140922-EONE57-U-05	Carving:	NA
Type:	area rug	Scale on A4:	1 : 15 cm
Quality:	handtufted H550, B4	Designer:	NK
Content:	100% NZ Wool	Extra notes:	color B in loop

Uriel option 05 - simulation view for loop indication



1mm
high pile

A
ARS BP10 Wool cut
B
ARS BN06 Wool cut
C
ARS CF02 Wool cut

Date and sign or stamp for approval