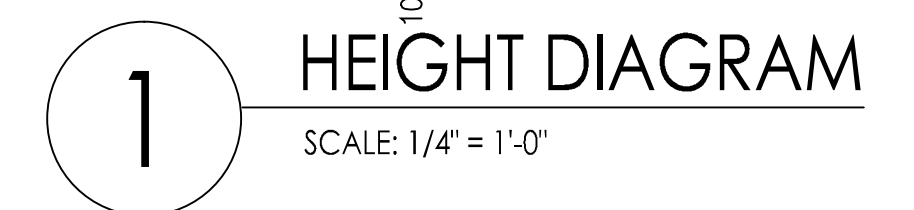


REFLECTED CEILING - LEGEND

ALL DIMENSIONS ARE FROM FINISH FLOOR

- C 1 10'-7" AFF KADEX FINISH ON SLAB
- C 2 8'-9" AFF GYPSUM BD. HUNG CEILING
- C 3 9'-2" AFF GYPSUM BD. HUNG CEILING
- C 4 9'-10" AFF GYPSUM BD. HUNG CEILING
- C 5 7'-11" AFF GYPSUM BD. HUNG CEILING
- C 6 9'-8" AFF STONE / GLASS CEILING PANEL
- C 7 7'-11" AFF STONE CEILING PANEL
- C 8 8'-6" AFF GYPSUM BD. HUNG CEILING
- C 9 9'-4" AFF GYPSUM BD. HUNG CEILING
- C 10 8'-0 3/8" AFF WOOD CEILING PANEL
- C 11 8'-6" AFF GYPSUM BD. HUNG CEILING
- C 12 9'-10" AFF GYPSUM BD. HUNG CEILING
- C 13 8'-1 1/2" AFF KITCHEN CABINET SOFFIT - GYPSUM BD. HUNG CEILING
- C 14 9'-7" AFF GYPSUM BD. HUNG CEILING



2 DUPLEX REFLECTED CEILING PLAN @ 23RD FLOOR
SCALE: 1/4" = 1'-0"

FOR LIGHT FIXTURE LEGEND
REFER TO SHEET A-535

-PROVIDE O.P.G. @ GYP. BD. WALL PARTITION ABOVE CEILING WHERE REQ'D. FOR RETURN GRILLE TO HEAT PUMP. SEE MECH. DWGS.

-FINAL LOCATIONS OF RETURN GRILLE AND OPENING IN PARTITION TO BE COORDINATED WITH MECH. DWGS.

-FINAL LOCATION OF SPRINKLER TO BE COORDINATED WITH FIRE PROTECTION PLANS.

NOTE:
DIMENSION INFORMATION FOR BATHROOM LIGHTS, EXHAUST / SUPPLY AND ACCESS DOOR (WHERE INDICATED) - SEE DRAWING A-362.

157 WEST 57TH STREET
NEW YORK
NEW YORK

OWNER/CLIENT:
Extell West 57th Street LLC
805 THIRD AVENUE
NEW YORK, NY 10022

DESIGN ARCHITECT:
Atelier Christian de Portzamparc
1, rue de l'Aude
Paris, France
Tel: 33 1 40 44 80 00 Fax: 33 1 43 27 74 79

EXECUTIVE ARCHITECT:
SLCEArchitects, LLP
841 BROADWAY
NEW YORK, NY 10003
TEL: (212) 979-8400
FAX: (212) 979-8387

RESIDENTIAL INTERIOR DESIGN:
Thomas Juul-Hansen, LLC
180 Lafayette Street, 2th Floor
New York, NY 10013
Tel: (212) 922-1109 Fax: (212) 929-7114

HOTEL INTERIOR DESIGN:
YABU PUSHSELBERG
55 South Avenue
Toronto, ON Canada M4M 3M3
Tel: (416) 778-9779 Fax: (416) 778-9747
122 Spring Street, 4th Floor
New York, NY 10012
TEL: (212) 224-0886
FAX: (212) 224-0664

STRUCTURAL ENGINEER:
WSP CANTOR SEINUK
228 East 40th Street, 3rd Floor
N.Y.C. 10018-3303
TEL: (212) 354-6664
FAX: (212) 354-6668

MEP ENGINEER:
AKF
1501 Broadway, Suite 700
New York, NY 10036
TEL: (212) 354-6664
FAX: (212) 354-6668

EXTERIOR PERFORMANCE CONSULTANT:
Israel Berger Associates
232 Madison Ave.
New York, NY 10016
TEL: (212) 489-5389
FAX: (212) 489-5389

FOOD SERVICE CONSULTANT:
NEXT STEP DESIGN, INC.
116 West Street, Suite C
Annapolis, MD 21401
TEL: (410) 263-1200
FAX: (410) 260-1340

LANDSCAPE ARCHITECTURE:
terrain-nyc
200 Park Avenue South, Suite 1401
New York, NY 10003
TEL: (212) 537-4080
FAX: (212) 537-4079

NO. 157 West 57th Street
DATE: 2009-12
PROJECT NO.: 2009-12
DRAWN BY: MTF
CHECKED BY: MTF
DWG. NO.: **A-534**
157WEST-57TH-000912

REVISIONS:

- 01/31/13 ASI #30
- 07/19/12 ASI #22
- 04/15/12 BULLEIN #6
- 02/24/12 REVISION ASH #924
- 02/22/12 REVISION ASH #190
- 02/22/12 REVISION ASH #148
- 10/31/11 BULLEIN #7
- 07/21/11 REVISION ASH #92
- 04/29/11 BULLEIN #4
- 12/15/10 BULLEIN #5
- 09/24/10 BULLEIN #3
- 10/25/10 REVISION FOR CONSTRUCTION
- 03/26/10 65% CONSTRUCTION DOCUMENTS
- 03/22/10 60% CONSTRUCTION DOCUMENTS
- 01/29/10 50% CONSTRUCTION DOCUMENTS
- 01/05/10 REVISED DOB SUBMISSION
- 12/15/09 30% CONSTRUCTION DOCUMENTS
- 10/28/09 100% DESIGN DEVELOPMENT

NO. 157 West 57th Street
SCALE: 1/4" = 1'-0"
KEY PLAN:
DRAWING TITLE:
22ND REFLECTED CEILING PLAN (CONSTRUCTION)
32ND FLOOR - (MKTG.)