

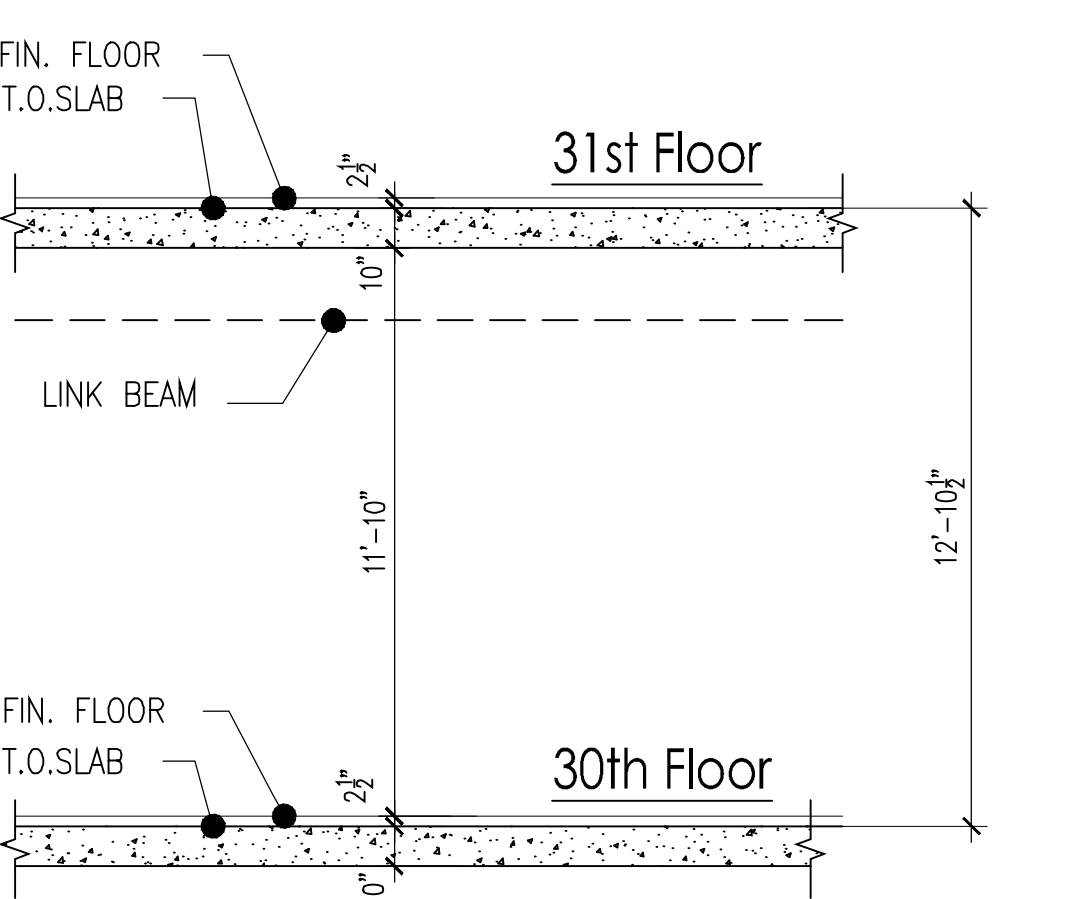
LIGHT FIXTURE LEGEND

SP	CONCEALED SPRINKLER HEAD
SP	SIDEWALL SPRINKLER HEAD EXTENDED THROW
SP	SIDEWALL SPRINKLER HEAD
□	SUPPLY AIR DIFFUSER
□	EXHAUST
↑	SUPPLY AIR WALL DIFFUSER
↑ SP	SUPPLY AIR WALL DIFFUSER AND SIDEWALL SPRINKLER EXTENDED THROW
↑ SP	SUPPLY AIR WALL DIFFUSER AND SIDEWALL SPRINKLER HEAD
○	R-TA WALL WASHER LIGHT
○	R-TB DOWN LIGHT
□	R-TD BATHROOM STRIP DOWNLIGHT
•	R-TF VANITY MOUNTED LIGHT
—	R-TG STRIP LIGHT
□	R-TH WET LOCATION DOWNLIGHT
—	R-TK KITCHEN STRIP DOWNLIGHT
⊕	R-TM CUSTOM PENDANT LAMP
⊕	CEILING SWITCHED JUNCTION BOX
⊕	CEILING JUNCTION BOX FOR WINDOW SHADES
□	R-TC
□	R-TN
□	R-TL
□	R-TC1
⊕	R-TAJ
⊕	R-TJ
⊕	R-TAE3
□	RETURN AIR DIFFUSER
□	RETURN AIR CEILING SLOT
⊕	SMOKE DETECTOR

REFLECTED CEILING - LEGEND

ALL DIMENSIONS ARE FROM FINISH FLOOR

C1	KADEX FINISH ON SLAB
C2	GYP. BD. HUNG CEILING
C3	GYP. BD. HUNG CEILING
C4	(PT06) GYP. BD. HUNG CEILING
C5	GYP. BD. HUNG CEILING
C6	ST04 STONE / GLASS CEILING PANEL
C7	GYP. BD. HUNG CEILING
C8	GYP. BD. HUNG CEILING
C9	GYP. BD. HUNG CEILING
C10	GYP. BD. HUNG CEILING
C11	GYP. BD. HUNG CEILING
C12	GYP. BD. HUNG CEILING
C13	(PT01) WOOD CEILING PANEL
C13A	WOOD CEILING PANEL
C14	(PT06) GYP. BD. HUNG CEILING
C15	ST06 STONE CEILING PANEL
C16	KITCHEN CABINET SOFFIT - GYP. BD. HUNG CEILING
C17	GYP. BD. HUNG CEILING
C18	GYP. BD. HUNG CEILING

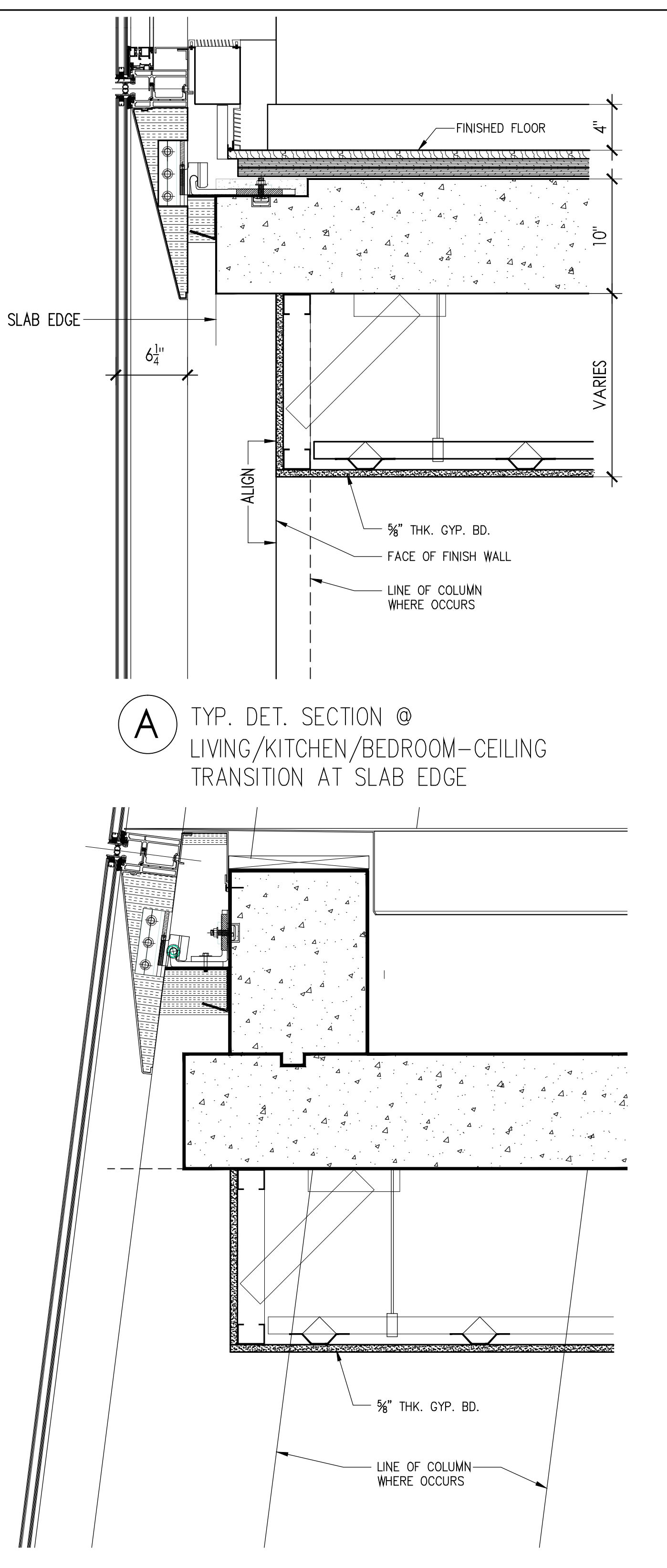


1 - PROVIDE O.P.E.G. @ GYP. BD. WALL PARTITION ABOVE CEILING WHERE REQ'D. FOR RETURN GRILLE TO HEAT PUMP, SEE MECH. DWGS.

2 - RETURN GRILLE AT CEILING FASCIA

3 - FINAL LOCATIONS OF RETURN GRILLE AND OPENING IN PARTITION TO BE COORDINATED WITH MECH. DWGS.

4 - FINAL LOCATION OF SPRINKLER TO BE COORDINATED WITH FIRE PROTECTION PLANS.



NOTE: SEE A-383 FOR TYP. SLAB EDGE DETAIL

157 WEST 57TH STREET
NEW YORK
NEW YORK

OWNER: GUY FOKER
Extell West 57th Street LLC
805 THIRD AVENUE
NEW YORK, NY 10022

DESIGN ARCHITECT:
Atelier Christian de Portzamparc
1, rue de l'Ancêtre
Paris, France
Tel: 33.1.40.44.80.00 Fax: 33.1.43.27.74.79

EXECUTIVE ARCHITECT:
SLCEArchitects, LLP
841 BROADWAY
NEW YORK, NY 10003
TEL: (212) 979-8402
FAX: (212) 979-8307

RESIDENTIAL INTERIOR DESIGN:
Thomas Juul-Hansen, LLC
180 LAFAYETTE STREET, 2TH FLOOR
NEW YORK, NY 10013
Tel: (212) 929-7109 Fax: (212) 929-7116

HOTEL INTERIOR DESIGN:
YABU PUSHSELBERG
55 SOUTH AVENUE
TORONTO, ON CANADA M4M 3M3
Tel: (416) 778-9779 Fax: (416) 778-9747
122 SPRING STREET, 4TH FLOOR
NEW YORK, NY 10012
TEL: (212) 224-0886
FAX: (212) 224-0664

STRUCTURAL ENGINEER:
WSP CANTOR SEINUK
228 East 40th Street, 3rd Floor
N.Y.C. 10013-3303
TEL: (212) 354-5454
FAX: (212) 354-5468

MEP ENGINEER:
AKF
1501 Broadway, Suite 700
New York, NY 10036
TEL: (212) 354-5454
FAX: (212) 354-5468

EXTERIOR PERFORMANCE CONSULTANT:
Israel Berger Associates
622 Madison Ave.
New York, NY 10016
TEL: (212) 469-5389
FAX: (212) 469-5389

FOOD SERVICE CONSULTANT:
NEXT STEP DESIGN, INC.
116 West Street, Suite C
Annapolis, MD 21401
TEL: (410) 263-1200
FAX: (410) 269-1340

LANDSCAPE ARCHITECTURE:
terrain-nyc
200 Park Avenue South, Suite 1401
New York, NY 10003
TEL: (212) 537-4080
FAX: (212) 537-4079

07/28/13	RFI #1294
07/23/13	AS1 #401
07/15/13	AS1 #300
07/15/13	AS1 #301
07/15/13	AS1 #302
10-15-12	BULLETS #3
12-16-11	REBID AS AS1 #148
10-31-11	BULLETS #2
10-24-11	REBID AS AS1 #139
07-20-11	REBID AS AS1 #92
04-29-11	BULLETS #4
12-15-10	BULLETS #5
09-24-10	BULLETS #6
10-25-10	REBID FOR CONSTRUCTION
03-29-10	65% CONSTRUCTION DOCUMENTS
03-22-10	60% CONSTRUCTION DOCUMENTS
01-29-10	50% CONSTRUCTION DOCUMENTS
01-05-10	REVISED DOB SUBMISSION
12-15-09	30% CONSTRUCTION DOCUMENTS
10-28-09	100% DESIGN DEVELOPMENT

NO. DATE: Revision:
NONE APPROX. 1" = SCALE
DATE: 2/4/14
SCALE: 1/8" AFF
SEE DET. 2/4/14-361
DATE: 2/4/14
SCALE: 1/8" AFF
SEE DET. 2/4/14-361
DATE: 2/4/14
SCALE: 1/8" AFF
SEE DET. 2/4/14-361

KEY PLAN:
WEST 57TH ST
WEST 57TH ST

DRAWING TITLE:
30TH REFLECTED CEILING PLAN (CONSTRUCTION)
40TH FLOOR - (MKTG.)

SEAL & SIGNATURE: [Signature]
DATE: 2/20/14
PROJECT NO.: 2009-12
DRAWN BY: [Signature]
CHECKED BY: PA
DWG. NO.: **A-536**
1/2" (1/8" AFF) (2009-12)